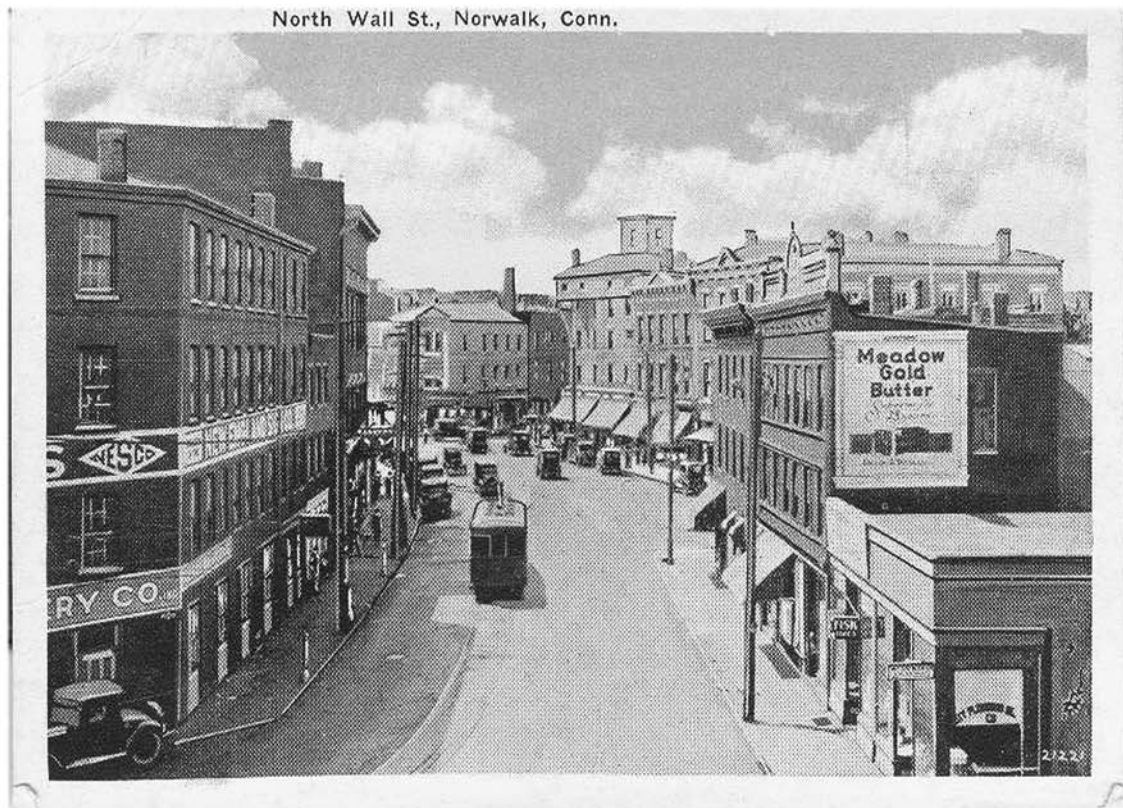




Lost Tracks

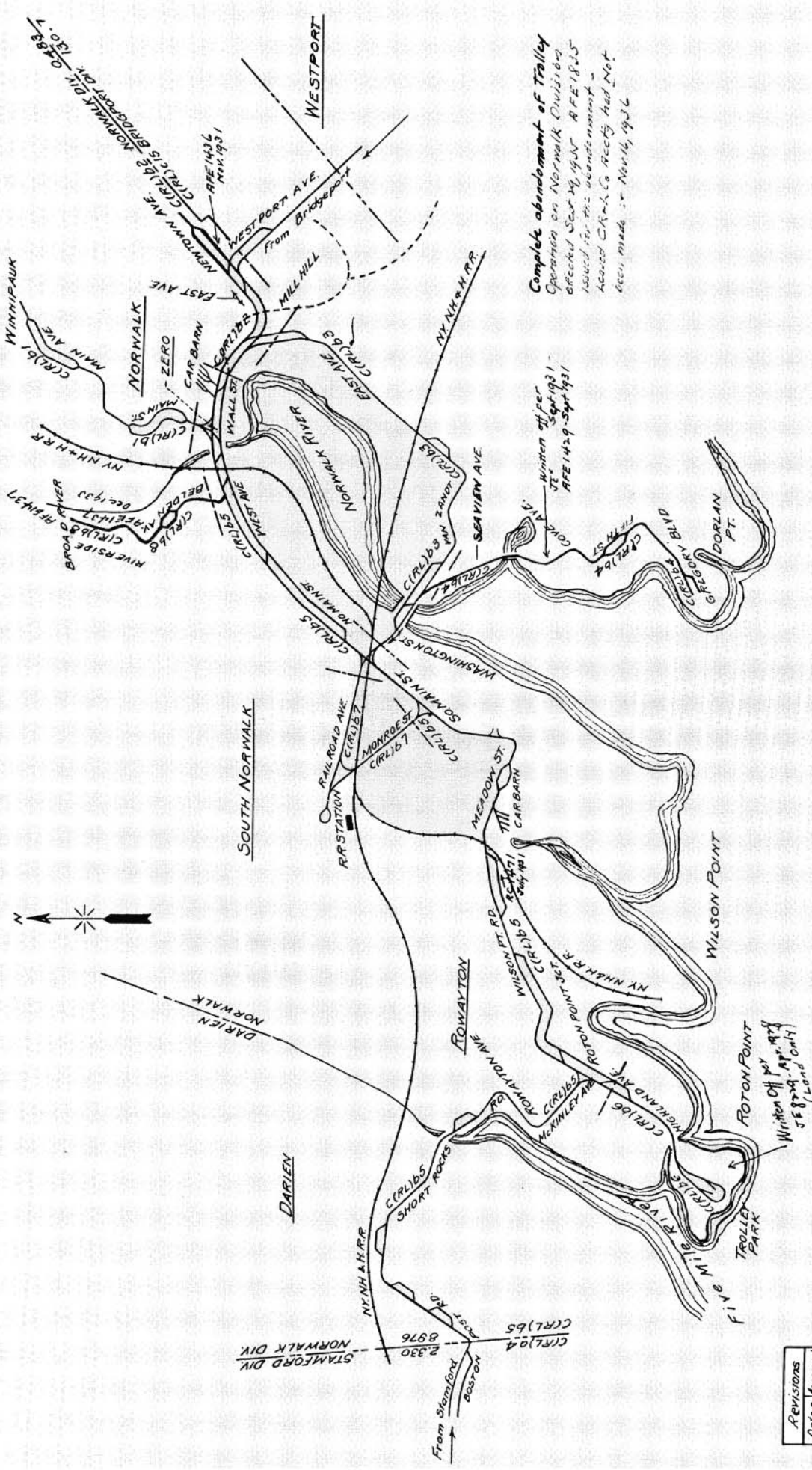
Norwalk's Historic Trolley Tour



A ride through history on Norwalk's original trolley routes
Presented by the Norwalk Preservation Trust

September 15, 2013

Opening event for Norwalk Historic Fortnight - Celebrating the Consolidation



Complete abandonment of Trolley Operation on Norwalk Division effected Sept 14, 1931 AFE 1429-Sept 14, 1931
 Account of this abandonment - Account of this abandonment - Account of this abandonment -
 made in April 14, 1931

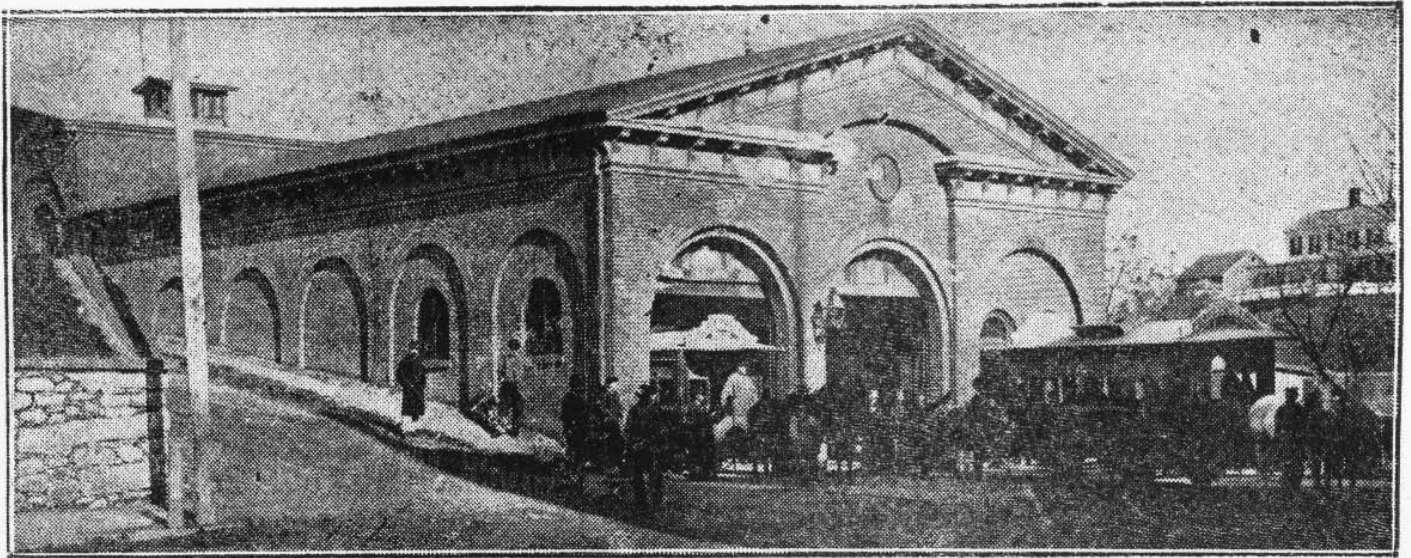
THE CONNECTICUT COMPANY
 VALUATION SECTION MAP
 OF
 THE NORWALK DIVISION
 VALUATION SECTION C(RL)B
 Office of Valuation Engineer
 Boston, Mass
 March, 1927
 C(RL)B-Leased From C.R. & L. Co.

Revisions	Dates	Approved
1-30-27	3-2-28	3-1-28
6-22-28	CEM	

Approved *[Signature]*

Norwalk's trolley routes

BARN AND STABLES OF THE NORWALK HORSE RAILWAY CO.

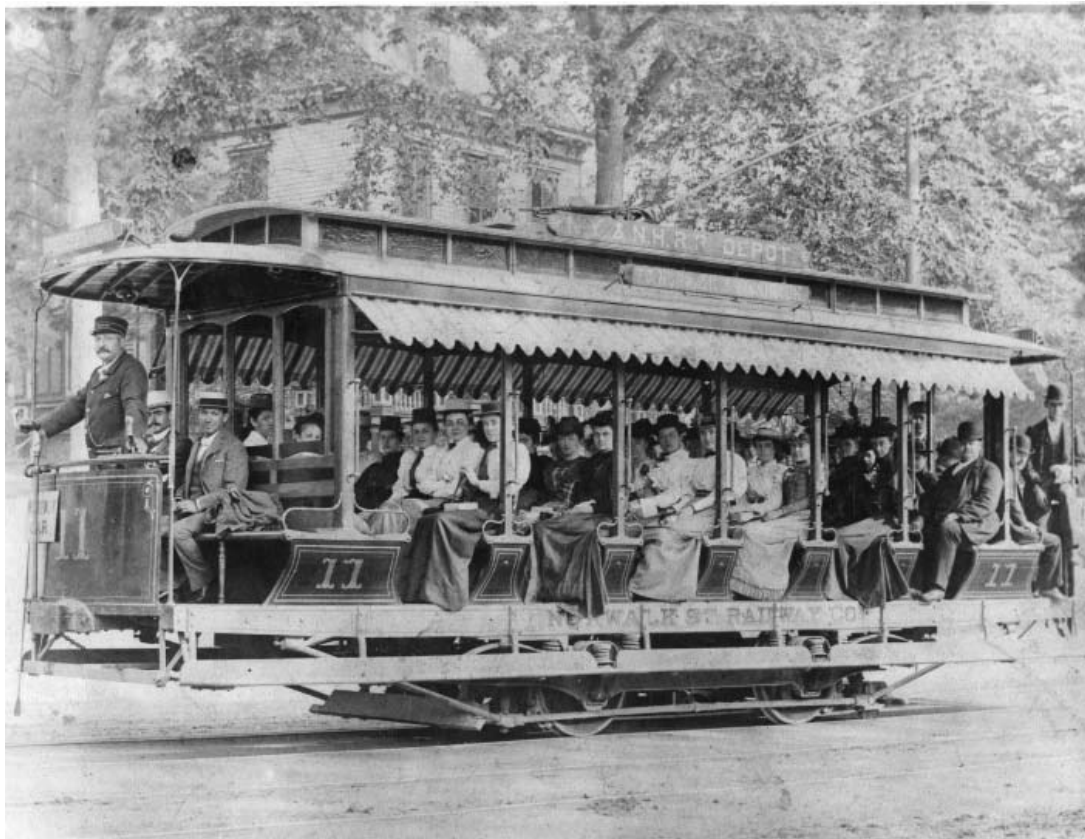


At 6:15 P. M. on August 10, 1863, The People's Line commenced operations and Norwalk's local transportation system was underway with tracks running from the Hour Square where the barn was being completed to the South Norwalk Railroad Station. Today the C. R. & L. barn in the same spot, having seen the horses go, the trolleys follow them and the arrival of today's busses, has only recently lost the names of the horses from its walls and the marks of the stalls they occupied there. This company was organized in 1861 by Asa Hill, LeGrand Lockwood, Edward J. Bissell and others. The father of George Benedict who had driven the Norwalk-New Canaan stage coach drove the first car, and Anthony Comstock drove the second. The line served approximately 600 persons a day in its early years and made 21 trips a day in each direction, about 81 miles per day, at six miles per hour. In 1896, the company pushed its lines down East avenue, across Van Zant street and the bridge to Washington street, making the great circle complete.

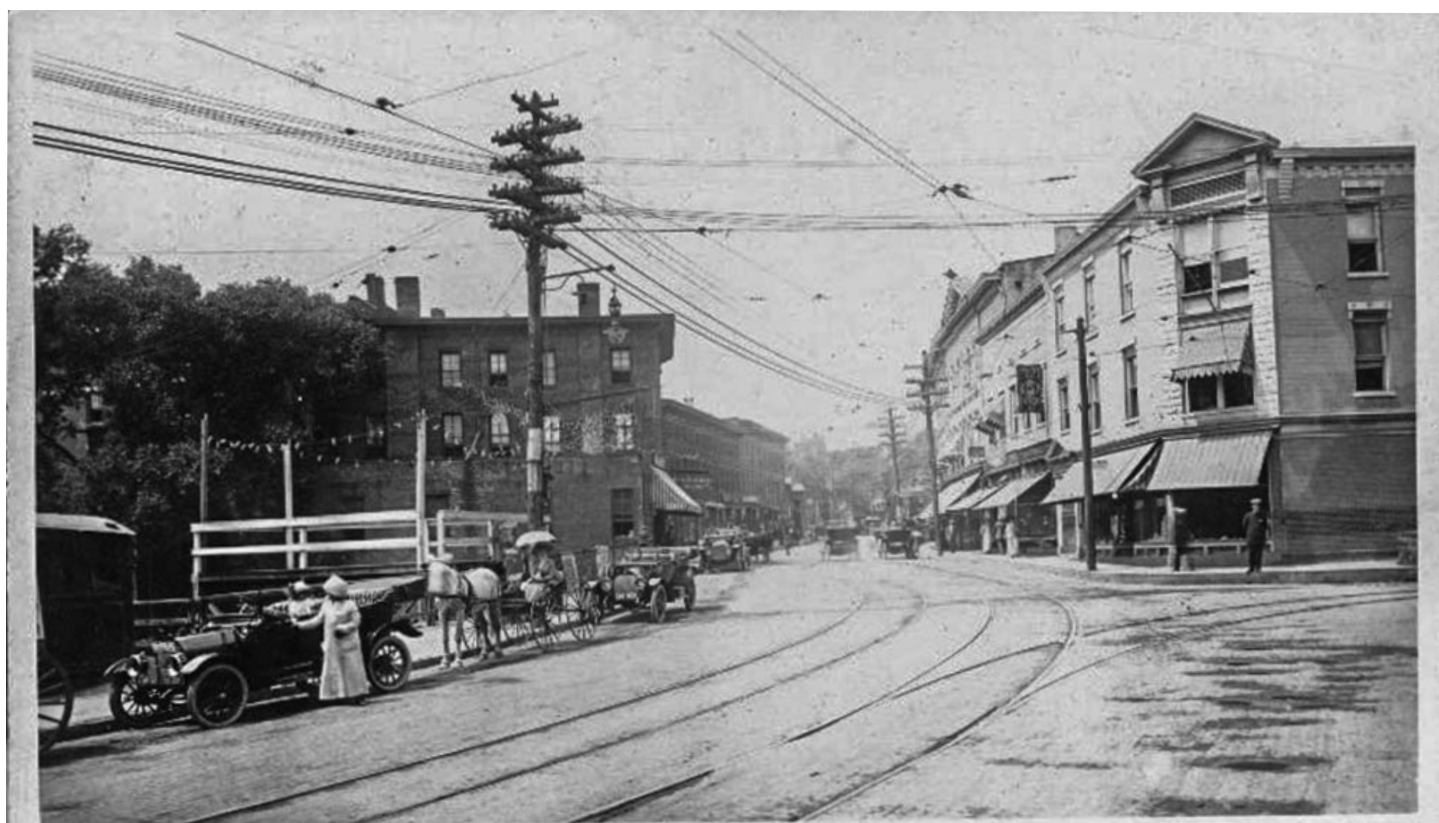
Trolley Barn



Open Trolley Leaving the Barn



Open Trolley c.1880



P2536 Wall Street, Norwalk, Conn.

Wall Street c.1915



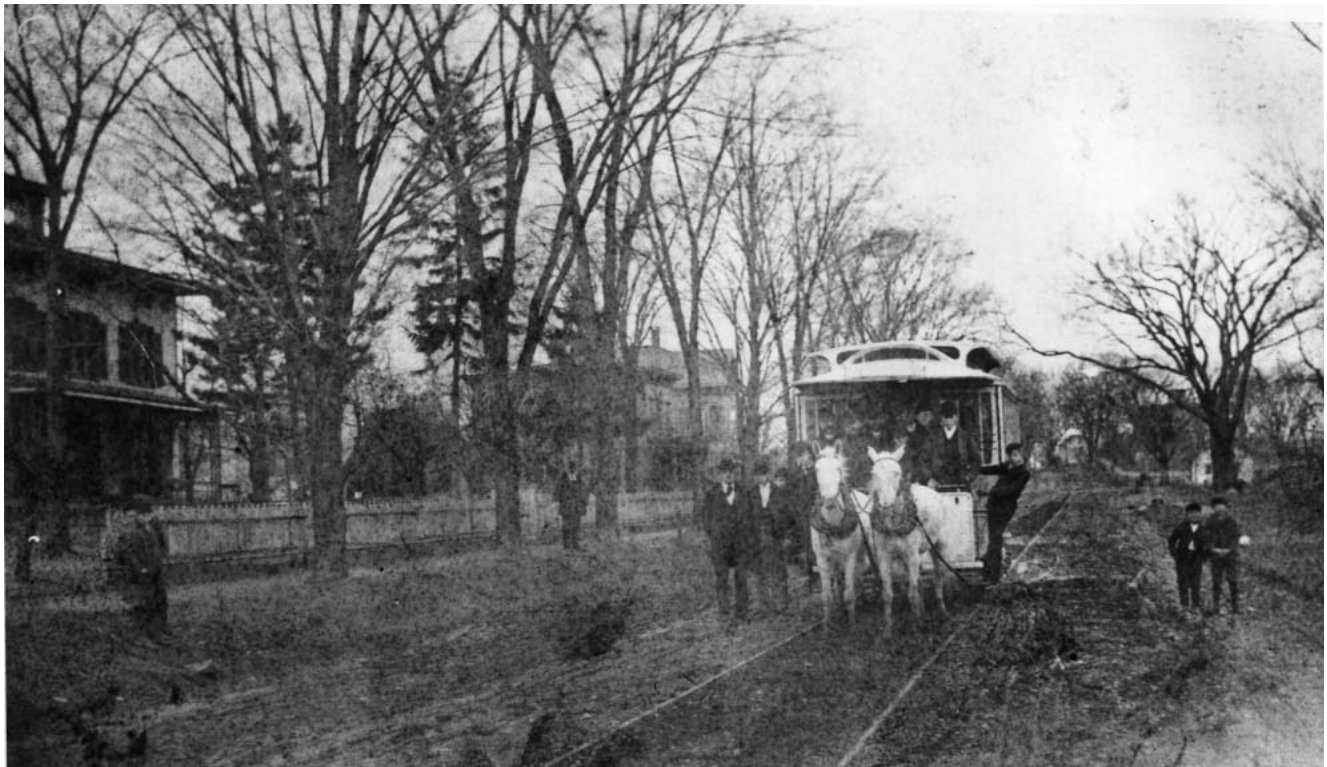
Wall Street c. 1906



Norwalk Hotel 1922



West Avenue 1918



Trolley on West Avenue c.1880



Norwalk Armory c.1890



William H Earle House c.1860



David Disbrow House c.1875



18th Century House on West Avenue, now an office building



Ebenezer Hill House



Horse Car on Washington Street



City Hotel and Music Hall 1875



Music Hall Interior



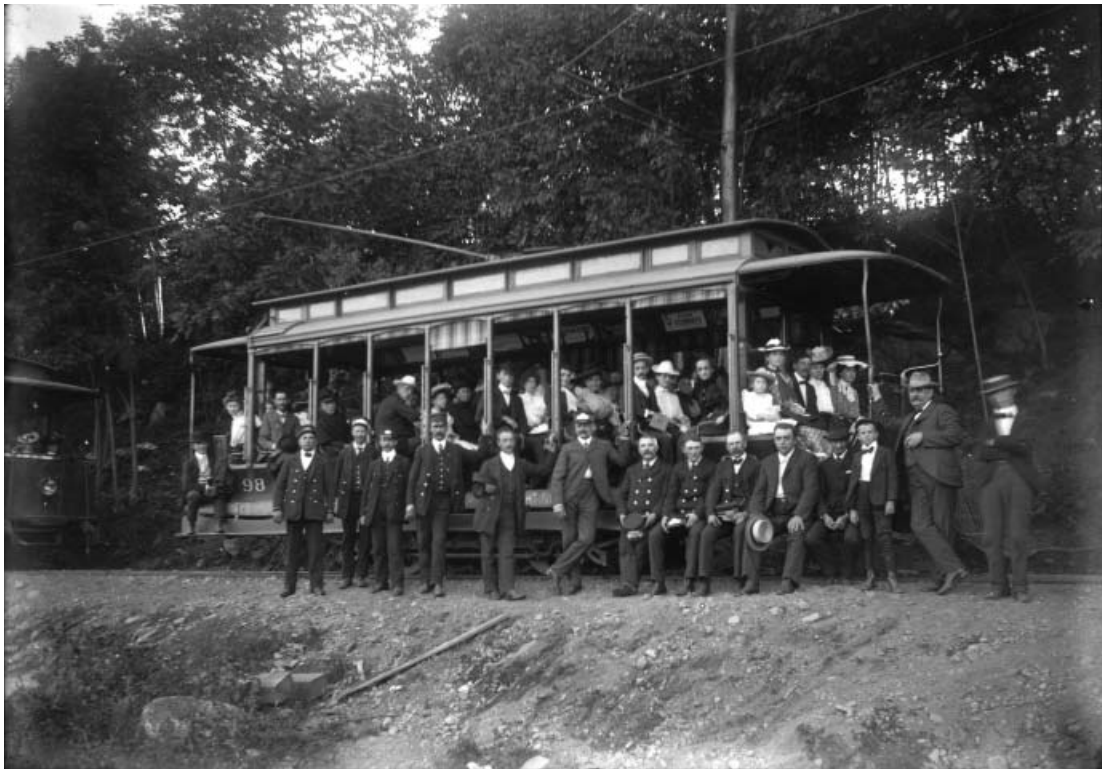
South Main Street Fire March 1983



Trolley Tracks to Roton Point



Castle Venice



Trolley going to Roton Point c.1910



Ladies at Roton Point 1897

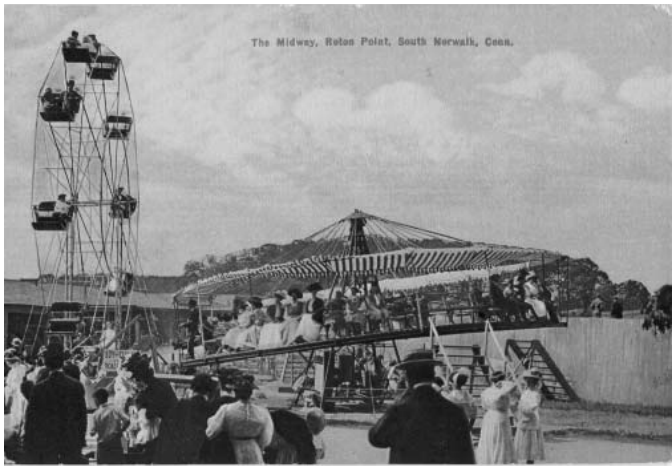
E WHIP, ROTON POINT PARK, SOUTH NORWALK, CONN.



Bathing Beach and Bath House, Roton Point, Conn.



The Midway, Roton Point, South Norwalk, Conn.

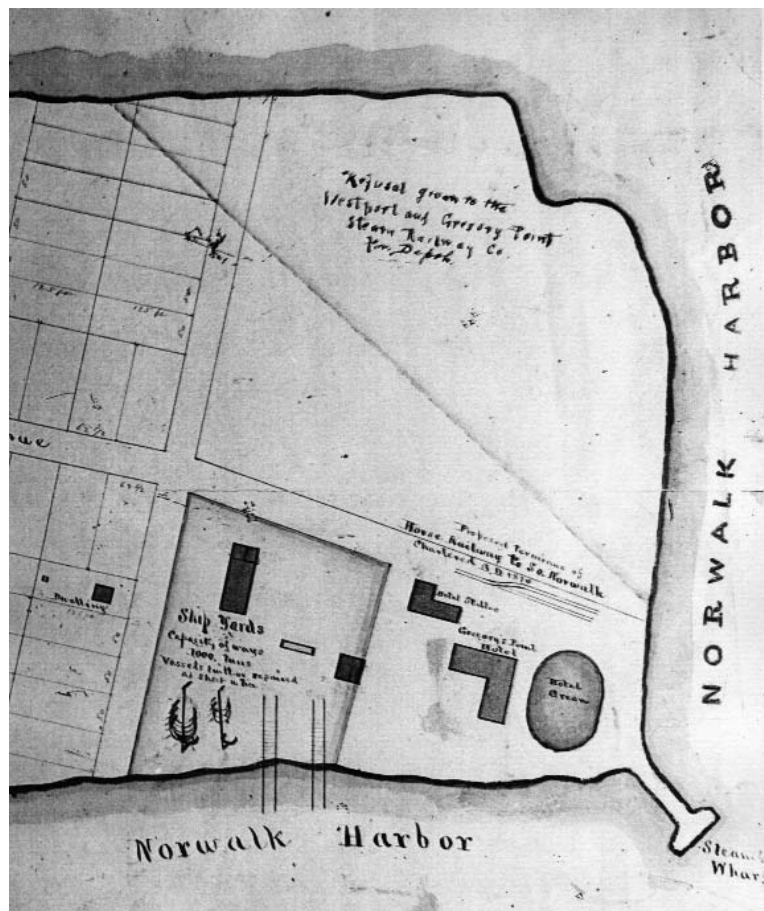


Dancing Pavilion and Crowd on Beach, Roton Point, Norwalk, Conn.





Liberty Square c.1910



Dorlon's map



Dorlon's



BETH ISRAEL SYNAGOGUE. CORNER SOUTH MAIN AND CONCORD STREETS. PROPERTY VALUE, \$16,000.00
ORGANIZED 1899

Synagogue

THANK YOU TO OUR *Crystal Theatre* REENACTORS



Samantha Kulish was born and raised in Norwalk, CT and even though she is currently a Ridgefield resident, Samantha still considers Norwalk “home”. When she’s not directing productions at Crystal Theatre, you can find her dressed in colonial garb as the school mistress for the Norwalk Historical Society’s Little Red Schoolhouse Program. Samantha is at her happiest when she can combine her three loves: theater, education and history!



Norwalk Native, Christina Johnson, is thrilled to be working with the Norwalk Preservation Trust! This college graduate started her theatrical experience with Crystal Theatre as a child and after years of living outside of CT she is glad to be back! You can see her ghoulish side in a few weeks at the Norwalk Historical Society’s “A Haunting at Mill Hill”!

Thank you for our other Reenactors David McCarthy and Peter Viteretto!
Thank you to CarolAnn Falasca, Tod Bryant, and Ralph Bloom for creating this tour.

Thank you to:
New York Bakery
52 Main Street
(203) 852-9510



The book “Roton Point” is available at local stores and through www.arcadiapublishing.com



From the 1870s through 1941, Roton Point Park was one of the preeminent attractions along the shores of Long Island Sound. From its shady picnic grove overlooking the water to its sandy beaches, hotel, dance floor, carousel, roller coaster, and midway rides, Roton Point attracted thousands of visitors each season. Damage from the 1938 hurricane and the start of World War II led to the park’s closing in 1941, and Roton Point was divided into

two private beach clubs and a public beach. Some of the old buildings remain, including the bathhouse, hotel, and gazebo at Roton Point, and the roller-coaster entry at Bayley Beach.

The Roton Point History Committee is a dedicated group of members of the Roton Point Club and is charged with bridging the past and the present by collecting, preserving, and sharing artifacts and memories of Roton Point.

Harris, Harris & Schmid, Inc.

 M.F. DiScala
& Company, Inc.

tuliptree
site design, inc.

NORWALK  DEVELOPMENT AGENCY



Tinto
BAR TAPAS

norwalk 2.0

THE SHORE LINE
TROLLEY MUSEUM
Operated by the
BRANFORD ELECTRIC RAILWAY ASSOCIATION

