

MAD MEN MODERN

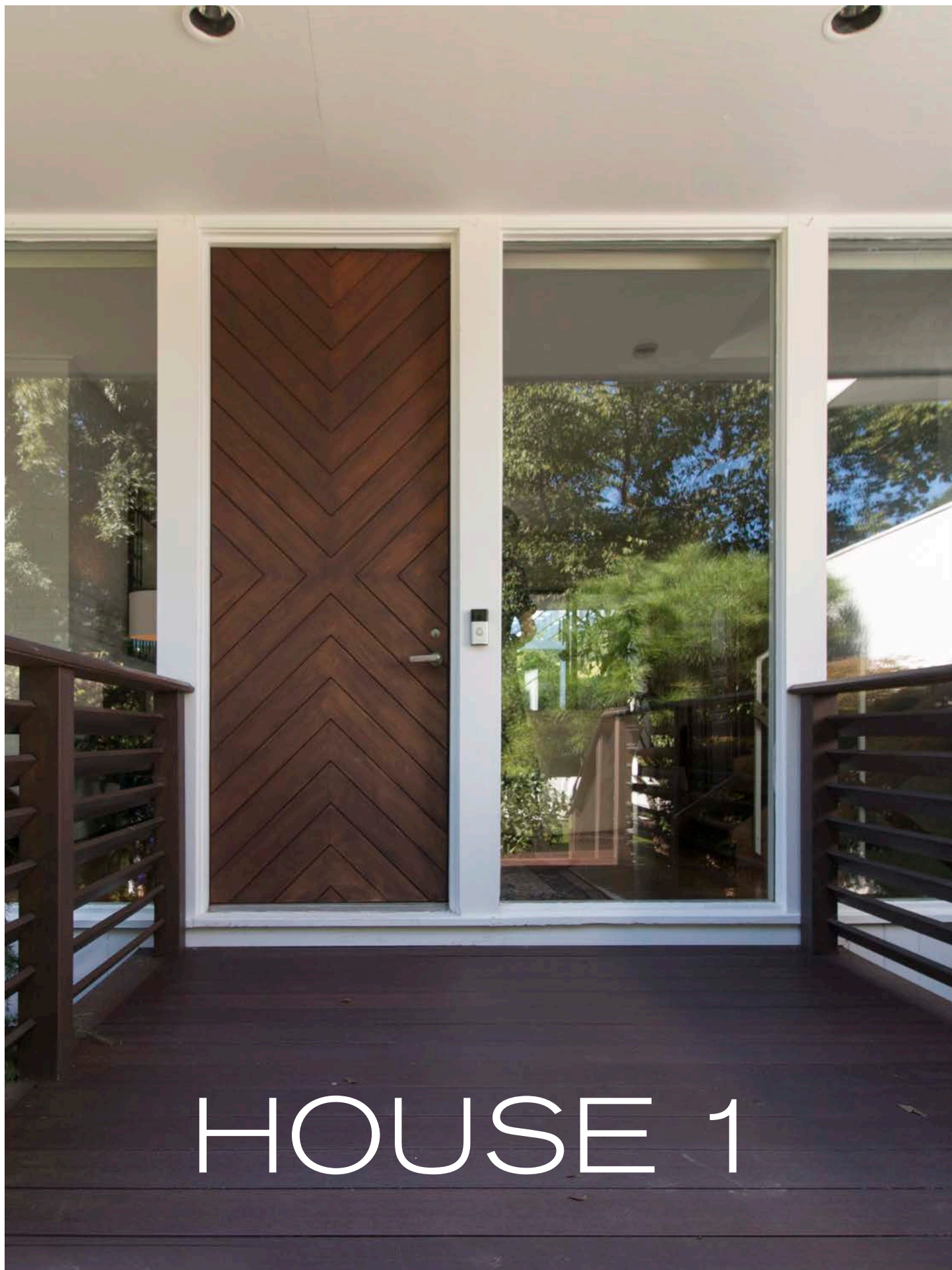


A TOUR OF NORWALK'S MODERN ARCHITECTURE

SEPTEMBER 16, 2018

PRESENTED BY THE

NORWALK PRESERVATION TRUST



HOUSE 1



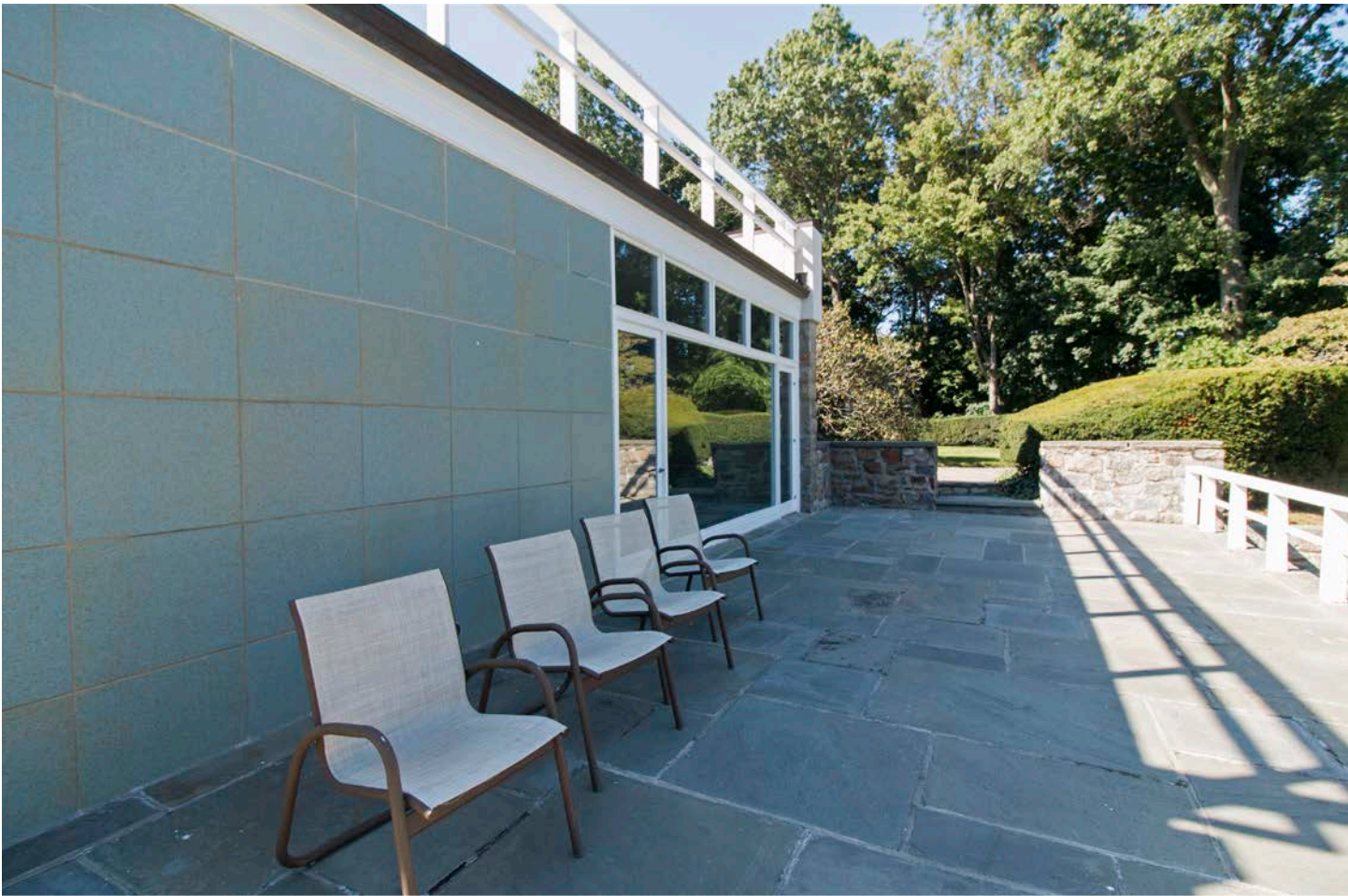


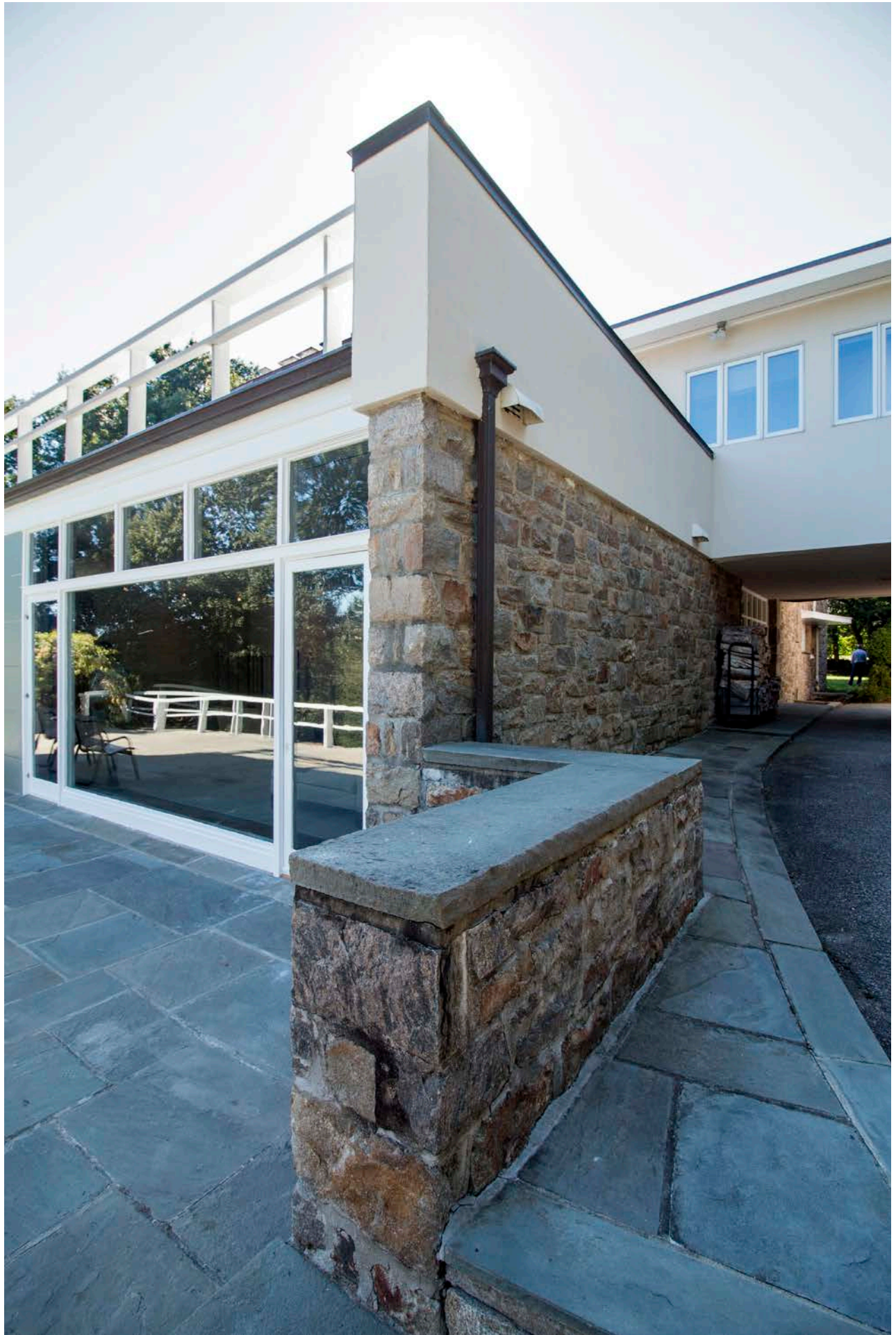


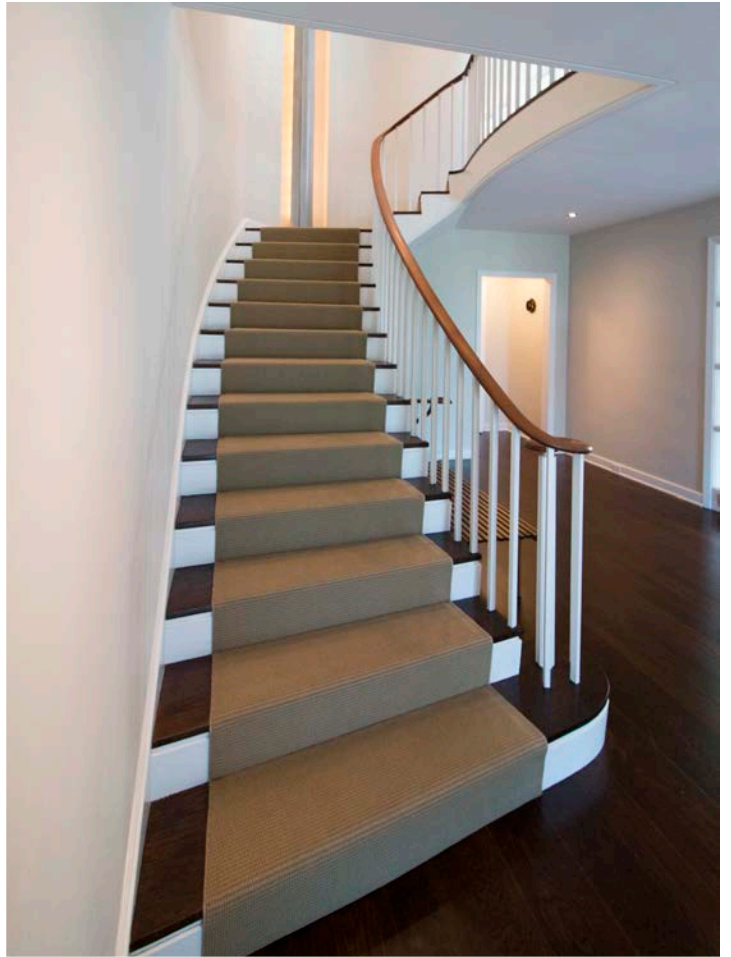


HOUSE 2

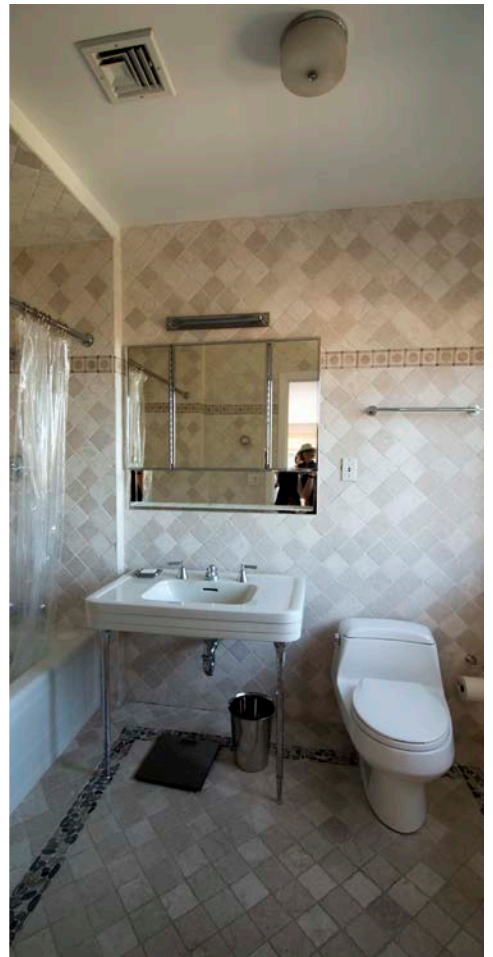














HOUSE 3







HOUSE 4





The image shows the interior of a modern church. The most prominent feature is the large, conical wooden dome ceiling, which is constructed from a series of radial wooden beams and horizontal rings of wooden planks. The wood has a warm, natural finish. In the foreground, there is a white, curved altar with a dark, circular top. On the altar, there are two lit candles in brass holders and a vase of purple and white flowers. To the left of the altar, a yellow banner with a red sunburst design and the word "Joy" in white script hangs from the wall. In the background, a large window with a wooden frame allows natural light to enter. The overall atmosphere is warm and modern.

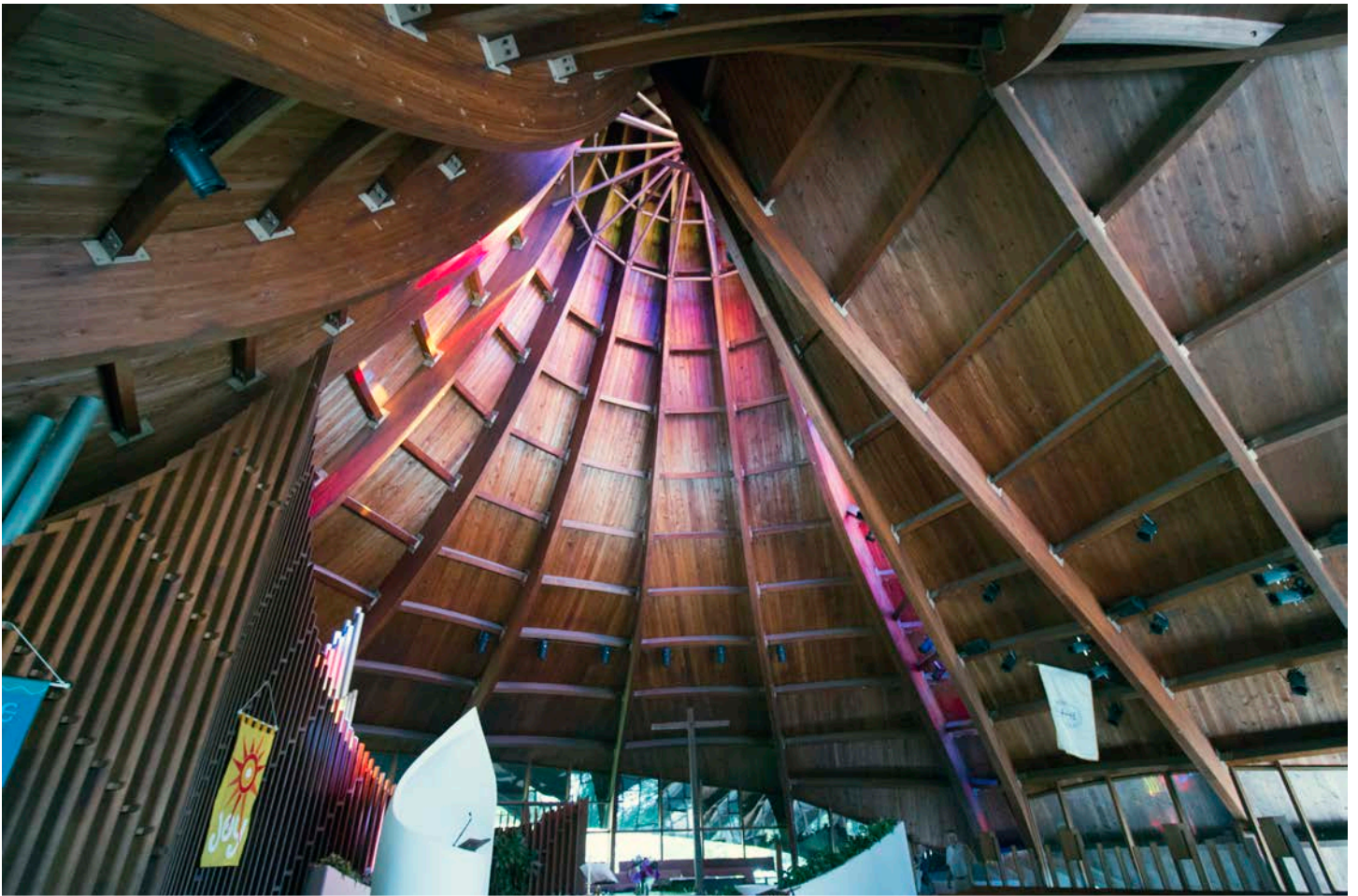
UNITED CHURCH

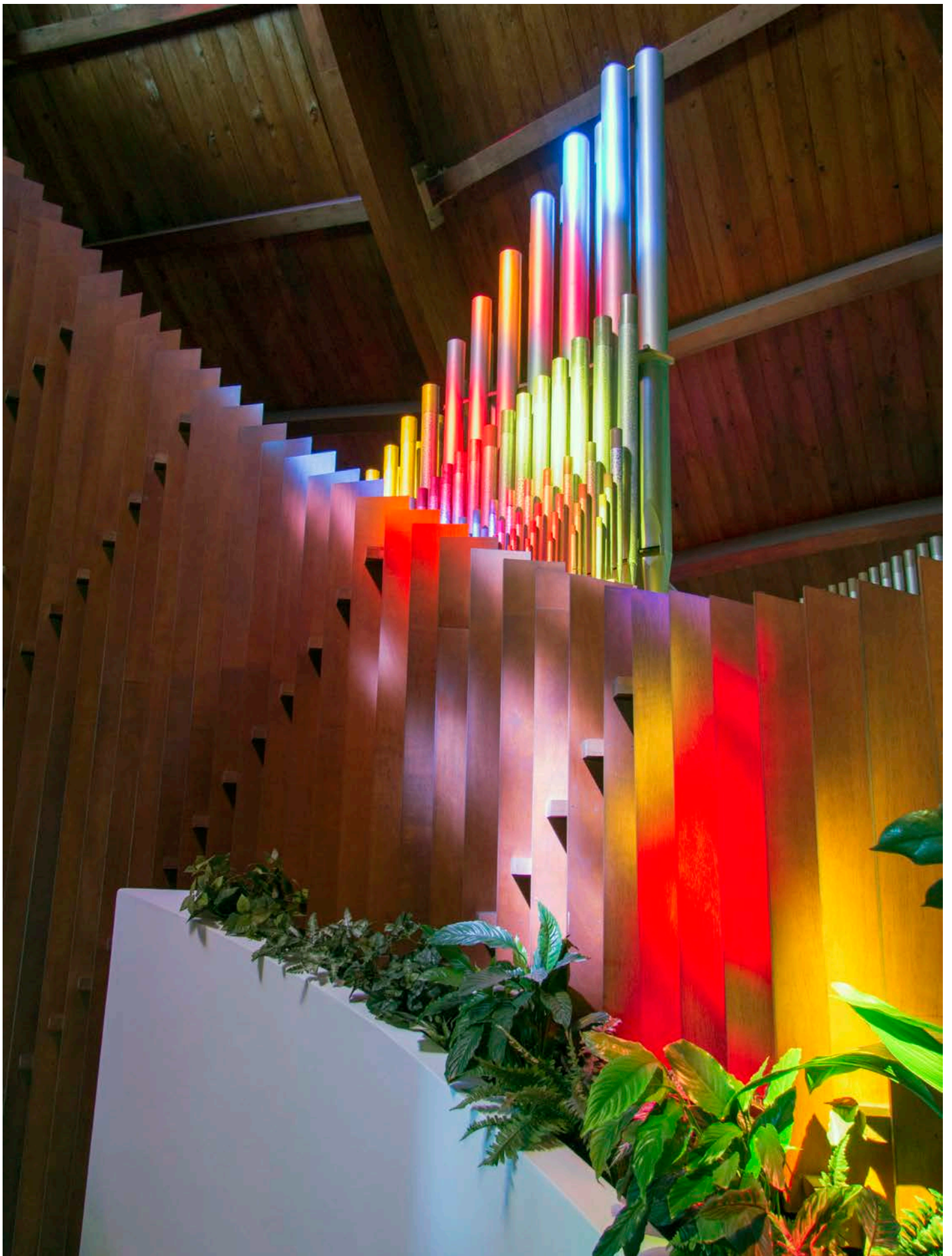
designed by Joseph Salerno













A TOUR OF NORWALK'S MODERN ARCHITECTURE



PHOTOGRAPHY BY ROBERT GREGSON

